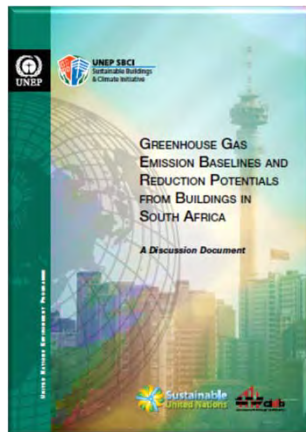
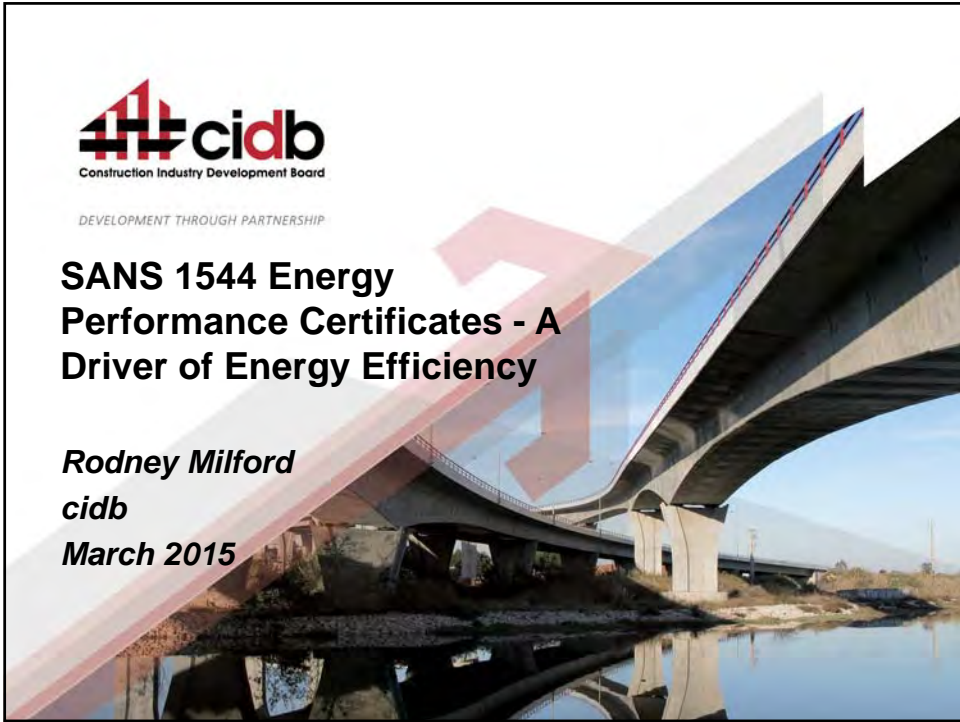




DEVELOPMENT THROUGH PARTNERSHIP

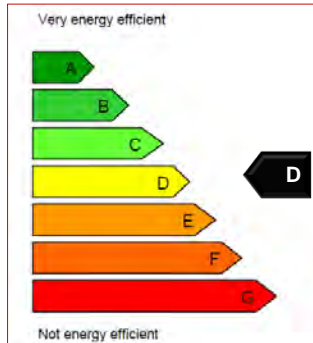
SANS 1544 Energy Performance Certificates - A Driver of Energy Efficiency

Rodney Milford
cidb
March 2015



DEVELOPMENT
THROUGH PARTNERSHIP

Reference Maximum Energy Consumption: SANS 10400XA Table 3



Classification of occupancy of building	Description of building	Maximum energy consumption kWh/m ²					
		Climatic zone ^a					
		1	2	3	4	5	6
A1	Entertainment and public assembly	420	400	440	390	400	420
A2	Theatrical and indoor sport	420	400	440	390	400	420
A3	Places of instruction	420	400	440	390	400	420
A4	Worship	120	115	125	110	115	120
F1	Large shop	240	245	260	240	260	255
G1	Offices	200	190	210	185	190	200
H1	Hotel	650	600	585	600	620	630

Table 3



DEVELOPMENT THROUGH PARTNERSHIP

EPCs for Residential Buildings?



DEVELOPMENT THROUGH PARTNERSHIP

Building Energy Efficiency Disclosure (BEED) Legislation: Australia

- Building Energy Efficiency **Certificate** (BEEC):
 - includes NABERS Energy rating
 - mandatory when commercial office space with net lettable area over 2000 square meters is advertised for sale or lease:
 - some exclusions
- Building Energy Efficiency **Register**:
 - details of Building Energy Efficiency Certificates
 - 62000 records (January 2015)



DEVELOPMENT
THROUGH PARTNERSHIP

EPCs Across Europe: Status

- EPCs are among the most important sources of information on the energy performance of EU's building stock
- EPCs have the **potential** to:
 - become effective instruments to track buildings' energy performance and the impact of building policies over time
 - support the implementation of minimum energy requirements within the regulatory process



*Buildings Performance
Institute Europe: 2014*



DEVELOPMENT
THROUGH PARTNERSHIP

EPCs Across Europe: Recommendations

- However, improvements in the **quality assurance processes** and better **compliance** will further enhance the EPC credibility and market impact:
 - consistently improve the **enforcement** of the EPC schemes
 - strengthen the role of EPCs in the context of national **legislation**, especially for renovation policies and programmes
 - introduce further **quality assurance** measures
 - guidance in the development of centralised EPC **registries**
 - promote the effective use of the EPC data



Buildings Performance Institute Europe: 2014



Linking Energy Codes and Disclosure Policies

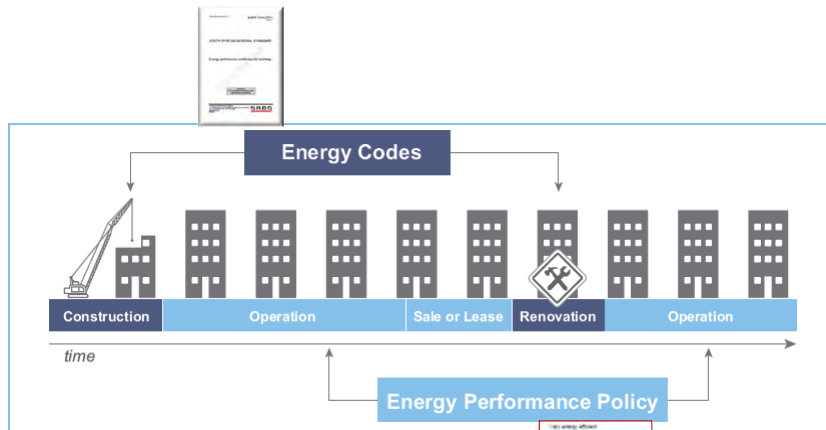
- Two key policy mechanisms available to assist with reducing building energy consumption are **energy codes** and **benchmarking** and **disclosure policies**
- Building energy codes and benchmarking and disclosure policies should be linked to allow policies to be most effectively implemented



Global Building Performance Network (GBPN) & Institute for Market Transformation (IMT) 2014

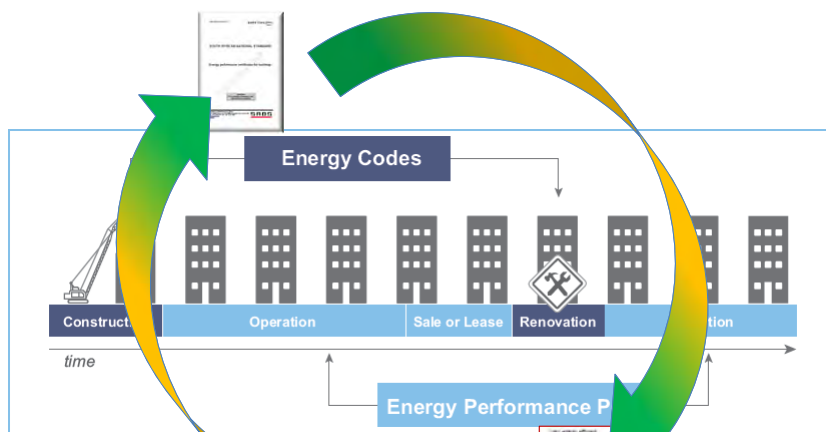


Linking Energy Codes and Disclosure Policies



After: Global Building Performance Network (GBPN)
& Institute for Market Transformation (IMT)
2014

Linking Energy Codes and Disclosure Policies



After: Global Building Performance Network (GBPN)
& Institute for Market Transformation (IMT)
2014

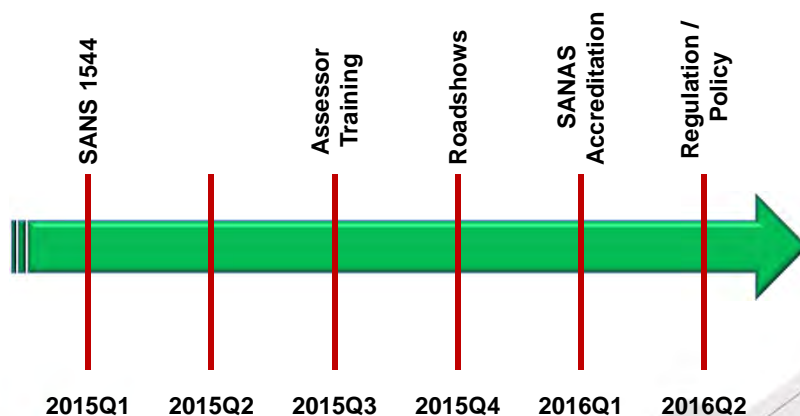
SANS 1544: Act / Regulation / Policy

- Draft DoE Regulation
- EPCs likely to be required to be displayed on buildings owned, operated or occupied by **organs of state**:
 - A1 (Entertainment and public assembly), A2 (theatrical and indoor sport), A3 (places of instruction), or G1 (offices)
 - buildings completed after 1999
 - 1 000m² and larger
 - 2 year phase-in
 - enacted 2015 /16?
- Extended to private buildings by 2018?
 - change of ownership or tenancy



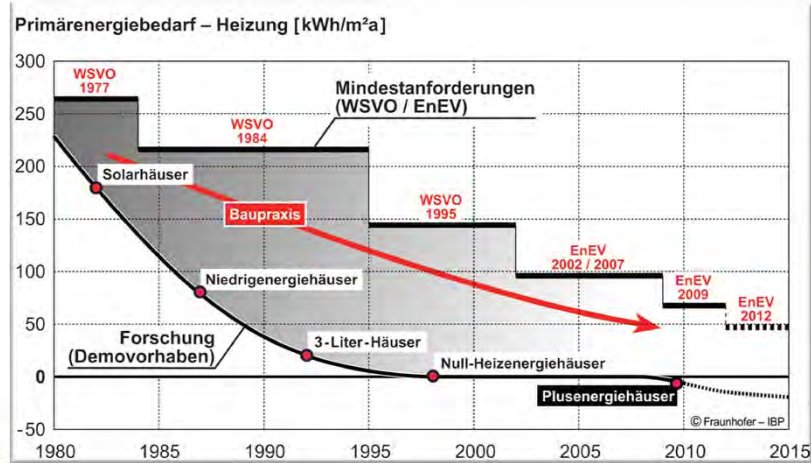
DEVELOPMENT
THROUGH PARTNERSHIP

Timeline (Estimated)



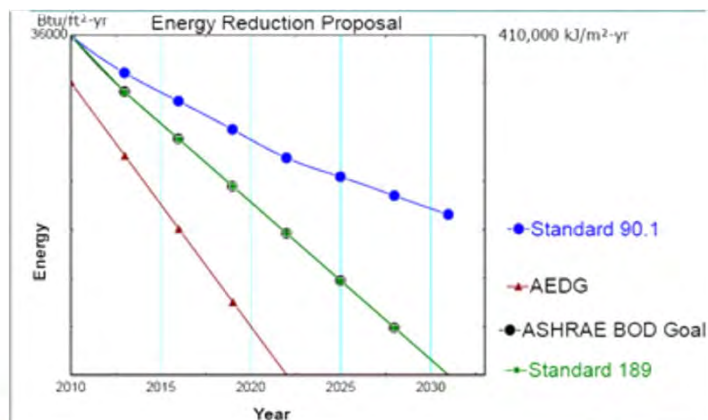
DEVELOPMENT
THROUGH PARTNERSHIP

Energy Efficiency Trajectory; EnEV



DEVELOP
THROUGH PARTNERSHIP

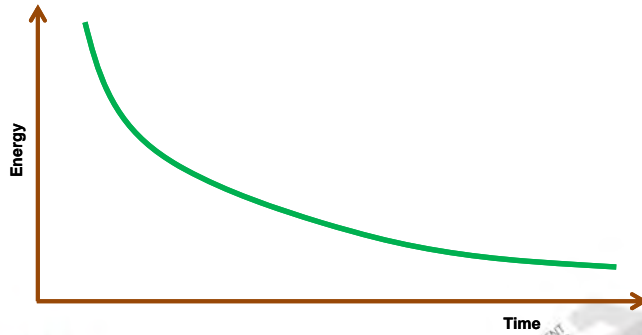
Energy Efficiency Trajectory: ASHRAE



DEVELOP
THROUGH PARTNERSHIP

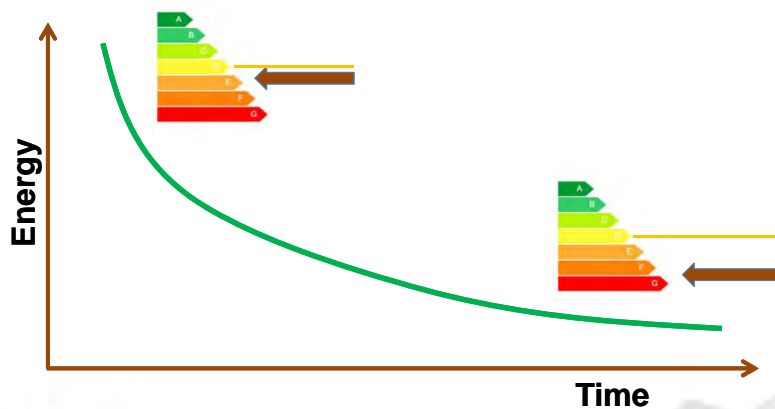
Energy Trajectory & Existing Buildings

- What / where is the trajectory for SANS 10400XA?
- DPW to facilitate establishment of EE trajectory
- SABS TC59 (3 February)



DEVELOPMENT
THROUGH PARTNERSHIP

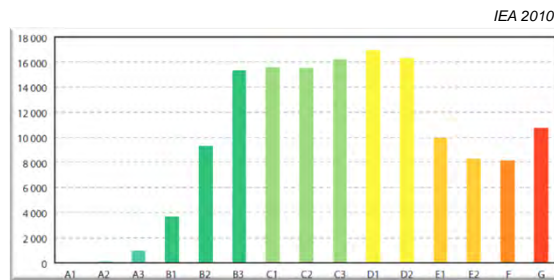
Energy Trajectory & Existing Buildings



DEVELOPMENT
THROUGH PARTNERSHIP

Building Energy Performance Register

- Information contained in the EPC to be submitted to the national Building Energy Performance Register (BEPR) to be established and maintained by SANEDI:
 - feedback loop into SABS 10400XA



DEVELOPMENT
THROUGH PARTNERSHIP



DEVELOPMENT THROUGH PARTNERSHIP

Thank You